

THE HEIGHT OF
ORIGINALITY







INTIMATE
LOBBY

GROUND FLOOR PLAN

The focal point of the ground floor is the unforgettable lobby. A glowing jewel box when viewed from the street, this intimate space is adorned with glass walls, muted limestone flooring and a dramatic illuminated glass sculpture suspended from the soaring ceiling.

This lobby fulfills the promise of Exhibit's striking exterior design, while acting as an anteroom for the elegance that is about to unfold.







GRACIOUS
PRIVATE DINING



INVITING
PARTY ROOM



EXPANSIVE
ROOFTOP OASIS

N I N T H
F L O O R P L A N

Here on the 9th floor, overlooking the spectacular outdoor oasis framed with lush hedges and mature trees, you will be able to host virtually every type of social event.

The bar lounge is ideal for small intimate gatherings. The party room, complete with fireplace, can be configured in a variety of ways with the ability to open the exterior glass wall and take the celebration outside.

And the private dining room, with its own lounge area and kitchen, is designed for the most elegant dinner parties.

Artist's Concept





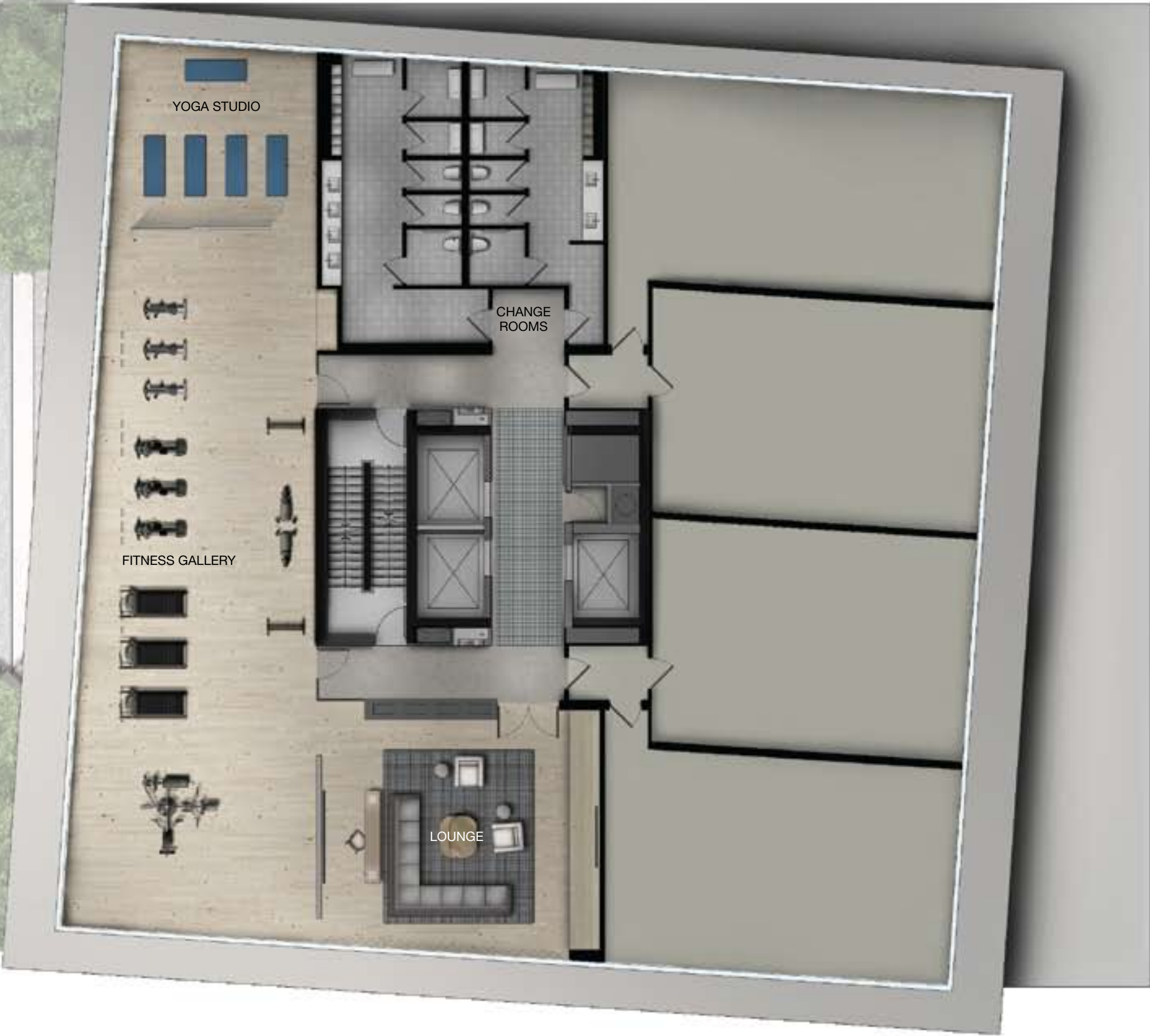
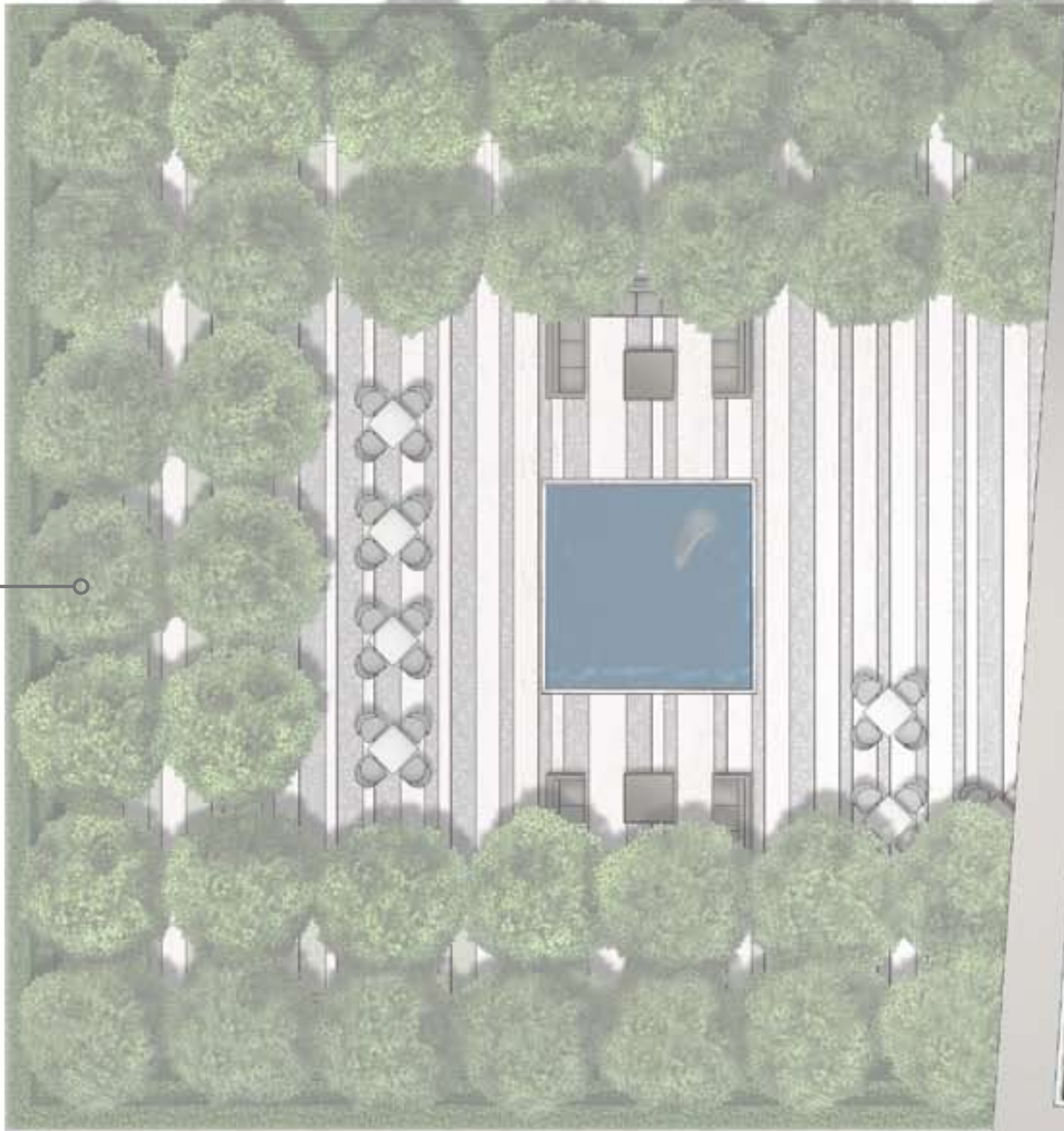
COOL DOWN
LOUNGE

T E N T H
F L O O R P L A N

The 10th floor is dedicated to health and fitness. The latest exercise equipment, yoga studio, lockers, showers and elegant cool down lounge will have you rethinking your gym membership.

And, the restful views of the tranquil oasis below provide the perfect backdrop for a great workout.

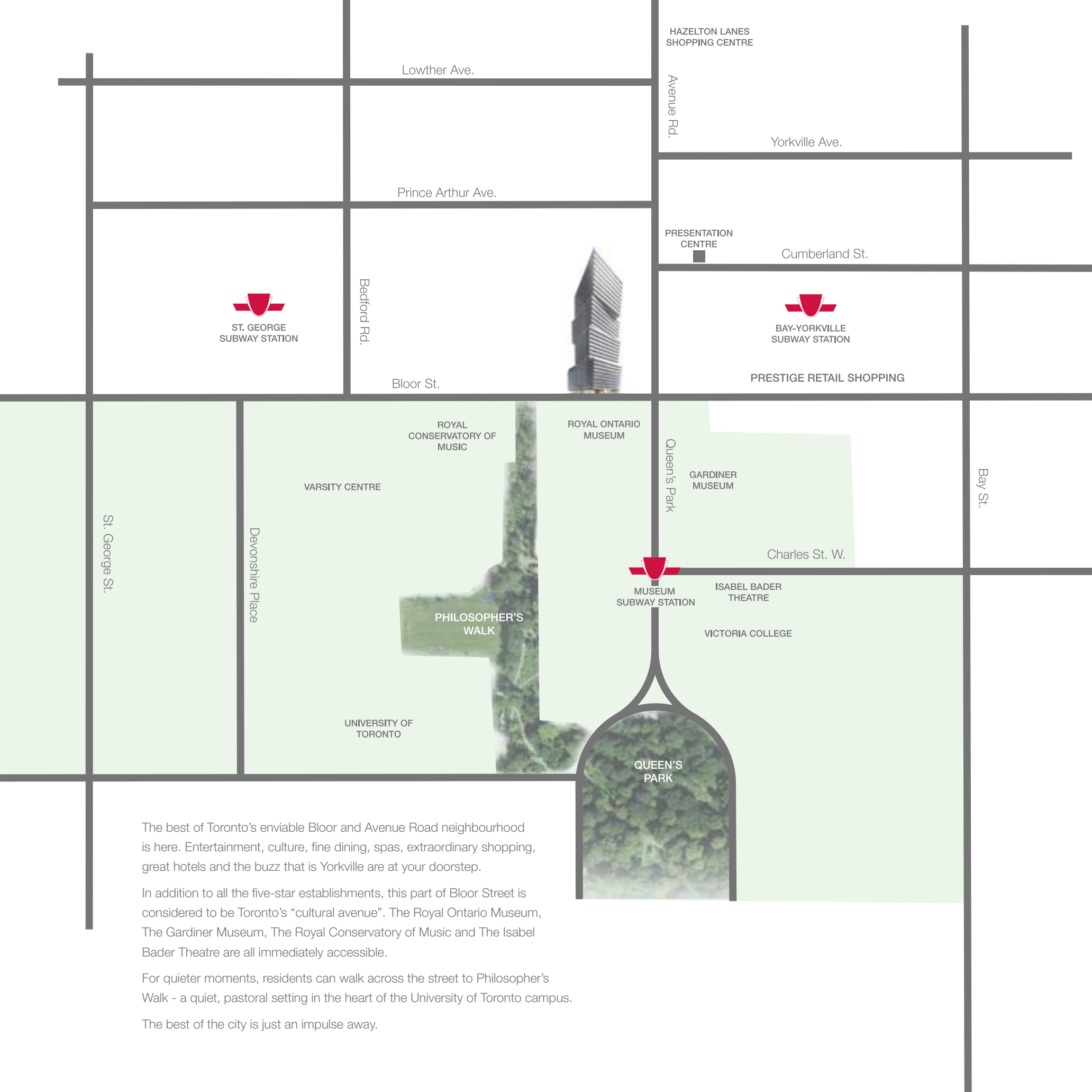
Artist's Concept





EVERLASTING
VIEW SOUTH





The best of Toronto's enviable Bloor and Avenue Road neighbourhood is here. Entertainment, culture, fine dining, spas, extraordinary shopping, great hotels and the buzz that is Yorkville are at your doorstep.

In addition to all the five-star establishments, this part of Bloor Street is considered to be Toronto's "cultural avenue". The Royal Ontario Museum, The Gardiner Museum, The Royal Conservatory of Music and The Isabel Bader Theatre are all immediately accessible.

For quieter moments, residents can walk across the street to Philosopher's Walk - a quiet, pastoral setting in the heart of the University of Toronto campus.

The best of the city is just an impulse away.

INSPIRING
VIEW NORTH





